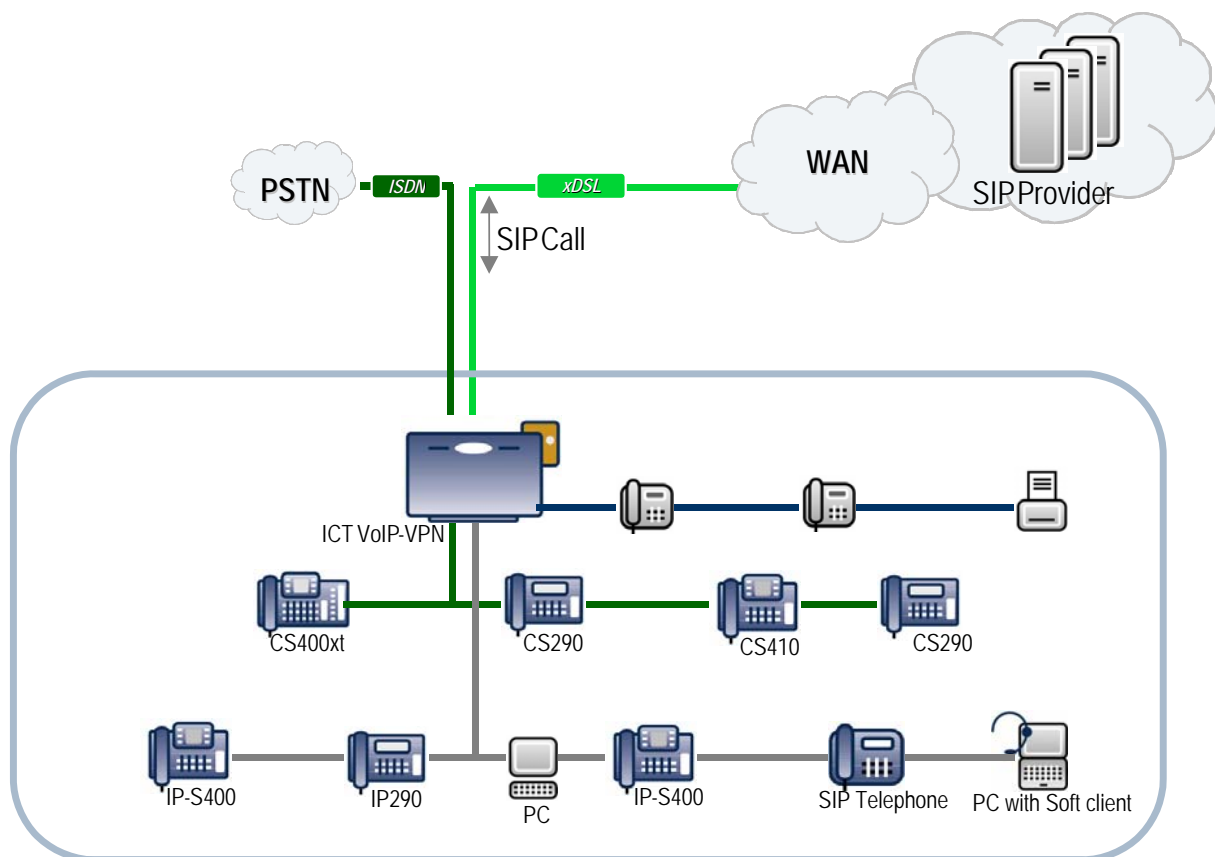


## ELMEG Solution – Using the elmeg ICT to connect to SIP Providers

The VoIP-VPN gateway module is an expansion module for your elmeg ICT series telecom system. This module offers a wide range of functions and solutions, also in combination with existing ICT installations. One of these solutions is the connection to SIP providers with which all of the end devices connected to the ICT system can take advantage of Internet telephony. This can reduce costs substantially when calls are frequently made to locations abroad.

An ICT system equipped to a VoIP-VPN gateway to SIP providers can be configured with several individual calling numbers as well as with extension numbers.



The ICT systems are able to store the connection data for up to 25 SIP registrations. The outgoing and incoming calls via the SIP providers are configured in the same way as those for the ISDN connections.

### **Incoming calls – Several different individual calling numbers**

During the configuration of a SIP registration, the allocated calling number is configured along with the provider registration data. Most providers currently require a separate registration for each calling number allocated. In the configuration of the telecom system you can then define an internal individual or a team that incoming calls will reach under this calling number. The different calling variants can then be used to adapt the signaling for the individual teams as required. You can use a calendar to switch between the calling variants or enter a code number manually.

### **Incoming calls – Extension numbers**

The ICT can also be connected to a SIP provider with extension numbers. In this case, only the master calling number will be signaled at the provider's. No further configuration of the telecom system is required for call signaling. External calls go through directly to the corresponding internal client. The ICT is also able to accommodate up to 10 extension numbers whose internal signaling does not correspond to the extension number dialed. These calls can be put through to other teams or individuals.

### **Outgoing calls**

Thanks to the extensive bundling functions, you can also individually define which external connections internal clients can use. The elmeg ICT LCR Professional can also be used to configure the automatic selection of the provider desired. Depending on the time of day and the number dialed, the system will then automatically use the previously configured provider.