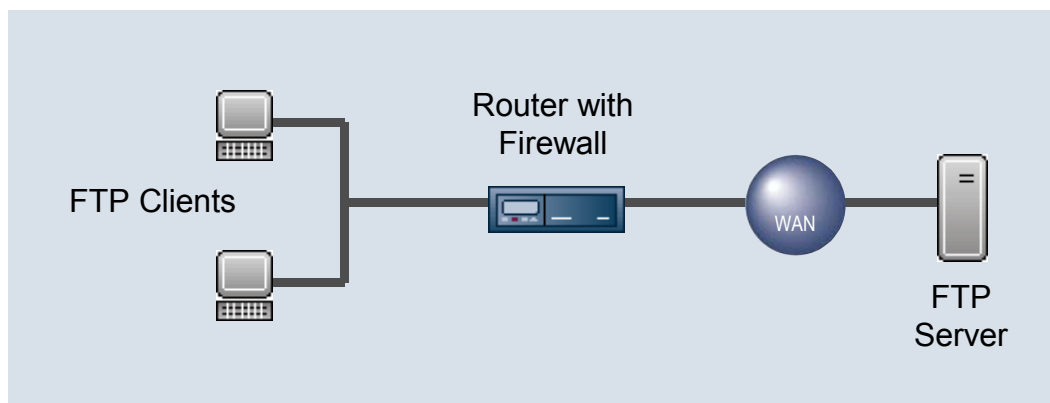


### **Bintec Solution – Stateful Inspection Firewall (3):**

#### **External connection setup using predefined port number**

Bintec's Stateful Inspection Firewall (SIF) offers a facility for blocking all externally initiated connections on principle. This offers a high degree of security, but prevents communication with external services that need to set up an initial connection. To still allow communication with such applications, the SIF offers a function for giving these services a defined port number, which is configured for letting such applications pass through the firewall. This is illustrated using the example of the FTP service (cf. Figure 1): The local network client needs access to a remote FTP service. For the actual data transfer, the FTP server itself would have to set up a connection to the client requesting the service, but this would be blocked by the firewall. The SIF therefore sends the configured port number to the FTP server on receiving the first request from the client and the server must use this number for the subsequent data transfer to the client. The firewall allows this connection to pass to the client and the download can take place.



*Figure 1: Connection to an external FTP server using SIF*